



2018
NEW INTRODUCTIONS

Nourison[™]

Nourtex[™]
Mills
A Division of Nourison

CONTENTS

NOURISON

- 04. ASTOR SQUARE | *Astor Collection*
- 06. ASTOR WAVE | *Astor Collection*
- 08. LEOPARD POINT | *Lusterpoint Collection*
- 10. STRIAE POINT | *Lusterpoint Collection*
- 12. TIGER POINT | *Lusterpoint Collection*
- 14. TRANSCEND
- 15. TRAVERSE
- 16. CELESTIAL | *Cosmopolitan Collection*
- 18. SHADOWSCAPE | *Cosmopolitan Collection*
- 20. SAROUK | *Grand Parterre Collection*
- 22. DIFFUSED | *Brushworks Collection*
- 23. VARIEGATED | *Brushworks Collection*
- 24. KERCHEVAL | *Grosse Pointe Collection*
- 25. LAKE SHORE | *Grosse Pointe Collection*
- 26. PROVENCAL | *Grosse Pointe Collection*
- 28. SPLENDOR STRIA | *Splendor Collection*
- 29. SPLENDOR WAVE | *Splendor Collection*

NOURTEX

- 30. BELLEVUE
- 32. BELLINGHAM
- 34. LONDON | *Euro Collection*
- 36. FIELDSTONE | *Maxell Collection*
- 37. CHAINSTITCH
- 48. KIAWAH CHEVRON | *Kiawah Collection*
- 39. MONTEREY
- 40. HAVANA | *Caribbean Collection*
- 41. KINGSTON | *Caribbean Collection*
- 42. SAN JUAN | *Caribbean Collection*



Nourison™

Nourtex™
Mills
A Division of Nourison



PRODUCT INFORMATION

COLLECTION:
ASTOR

CONSTRUCTION:
MACHINE TUFTED

FIBER CONTENT:
75% NEW ZEALAND WOOL
25% NOURLON™ NYLON

WIDTH:
12'

REPEAT:
0.05"W x 1"L

— *NEW! ASTOR COLLECTION* —

ALMOND



BOARDWALK



SUNDROP



MEADOW



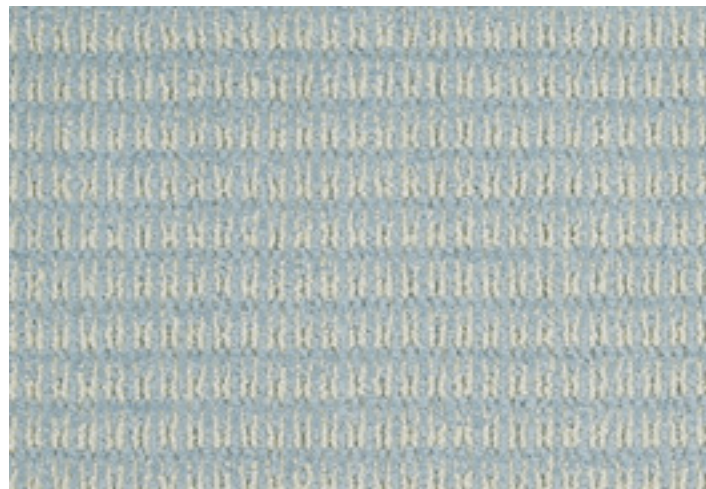
CANVAS



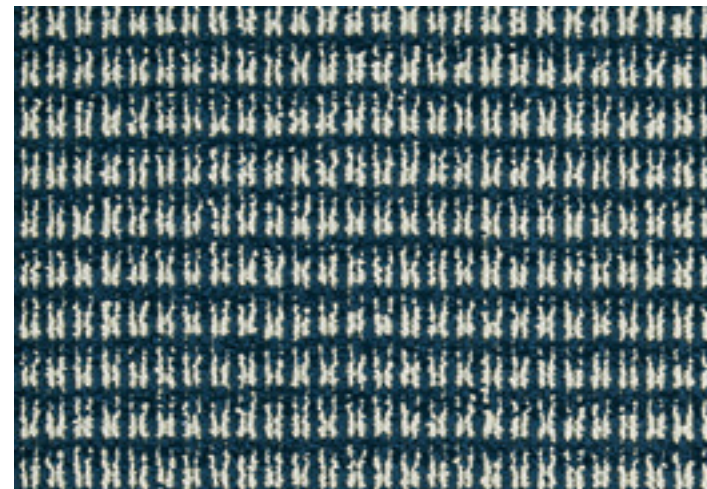
GREYSTONE



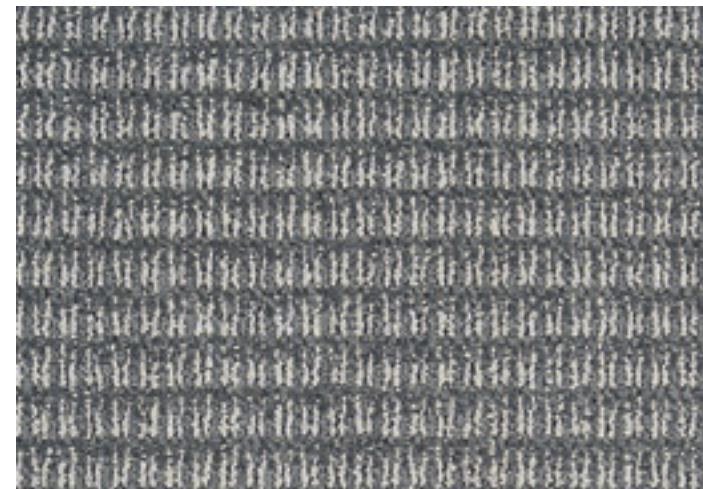
CARIBBEAN



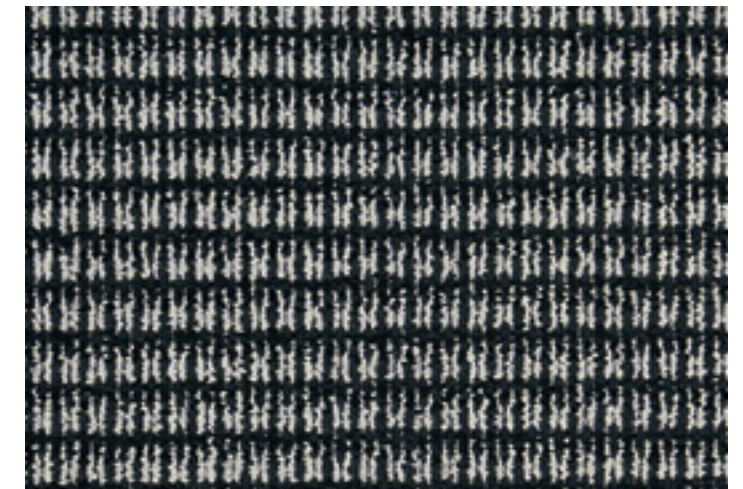
DOCKSIDER



CLOUDBURST



BLACK ROCK





PRODUCT INFORMATION

COLLECTION:
ASTOR

CONSTRUCTION:
MACHINE TUFTED

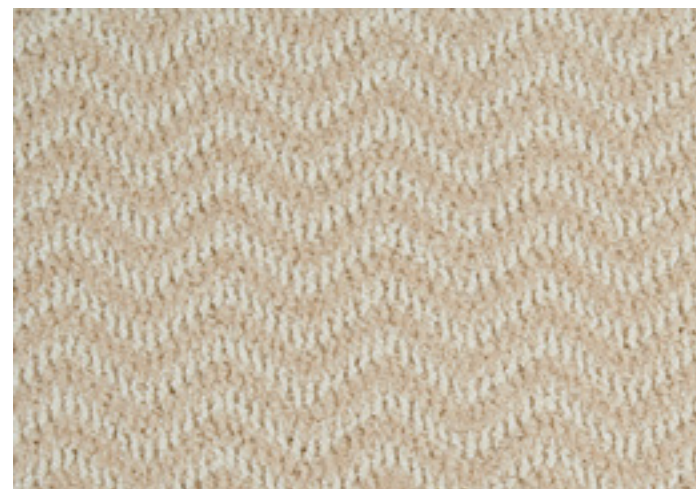
FIBER CONTENT:
75% NEW ZEALAND WOOL
25% NOURLON™ NYLON

WIDTH:
12'

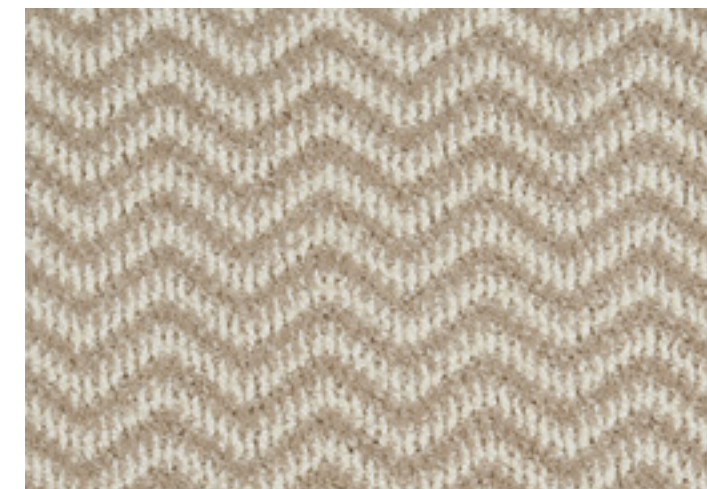
REPEAT:
2.75"W x 1"L

— *NEW! ASTOR COLLECTION* —

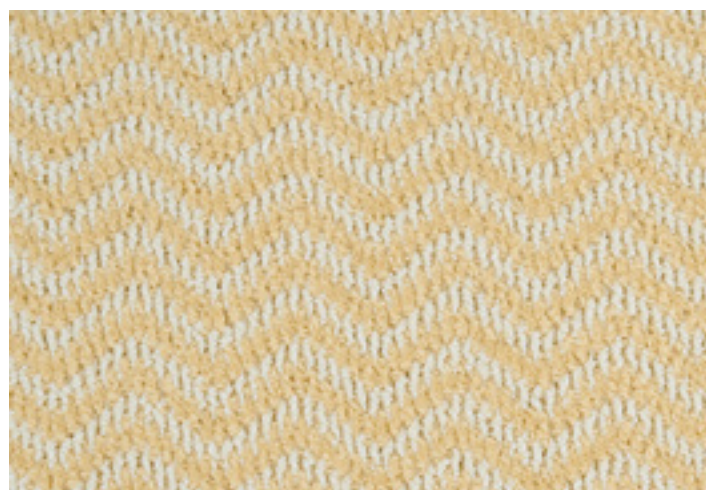
ALMOND



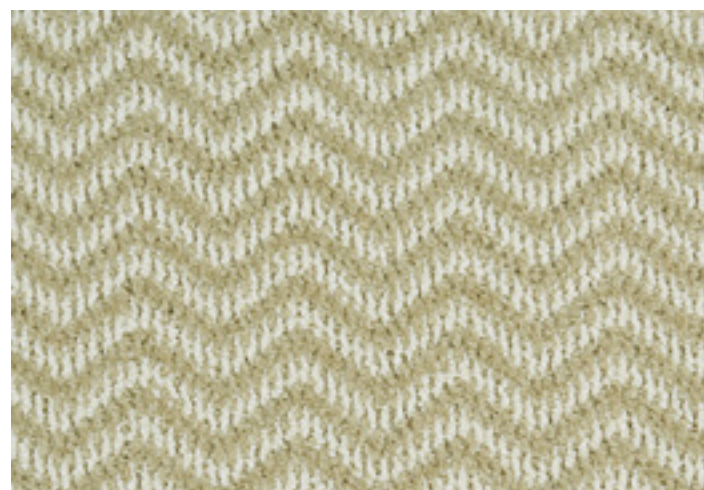
BOARDWALK



SUNDROP



MEADOW



CANVAS



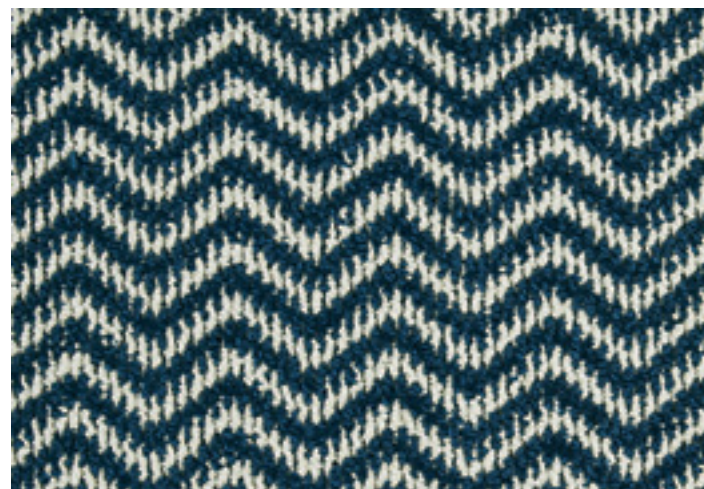
GREYSTONE



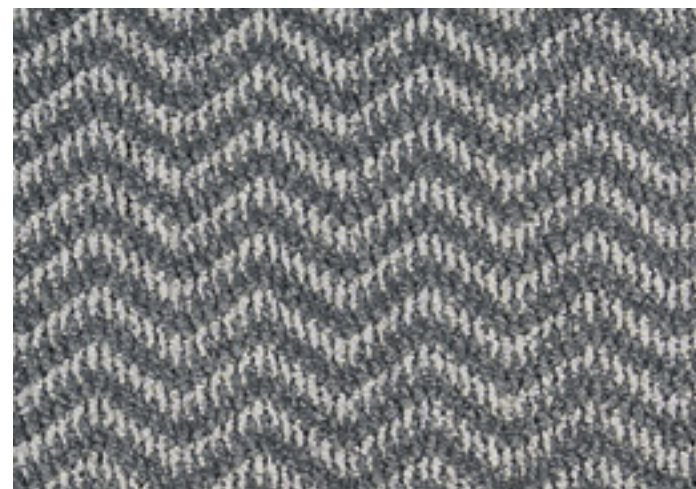
CARIBBEAN



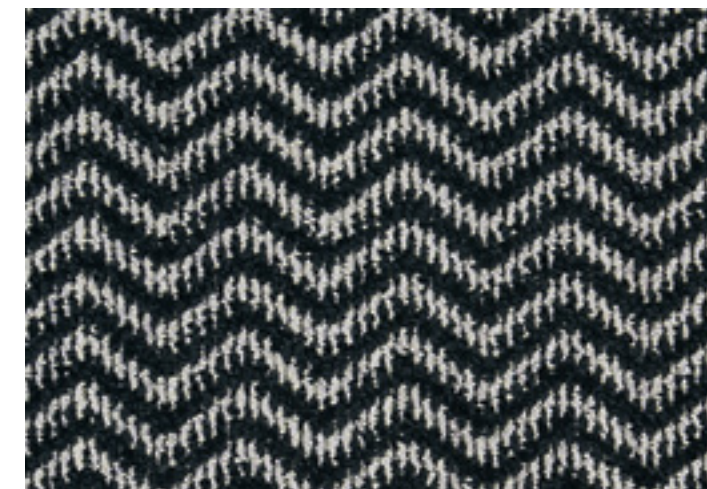
DOCKSIDER



CLOUDBURST



BLACK ROCK





PRODUCT INFORMATION

COLLECTION:
LUSTERPOINT

CONSTRUCTION:
MACHINE TUFTED
(applied pattern)

FIBER CONTENT:
50% NEW ZEALAND WOOL
50% NOURLON™ NYLON

WIDTH:
13'2"

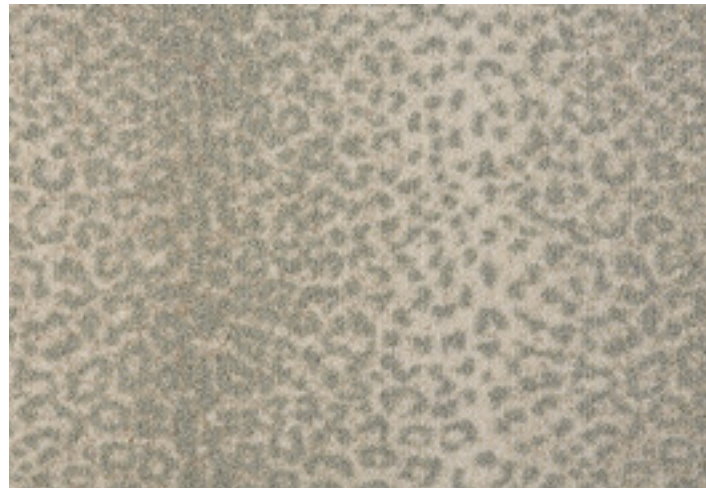
REPEAT:
19.11"W x 19.11"L

BRUSH

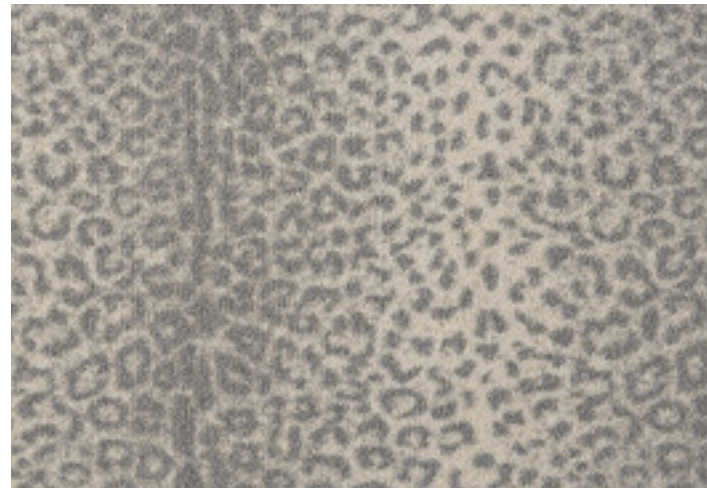


—NEW! LUSTERPOINT COLLECTION—

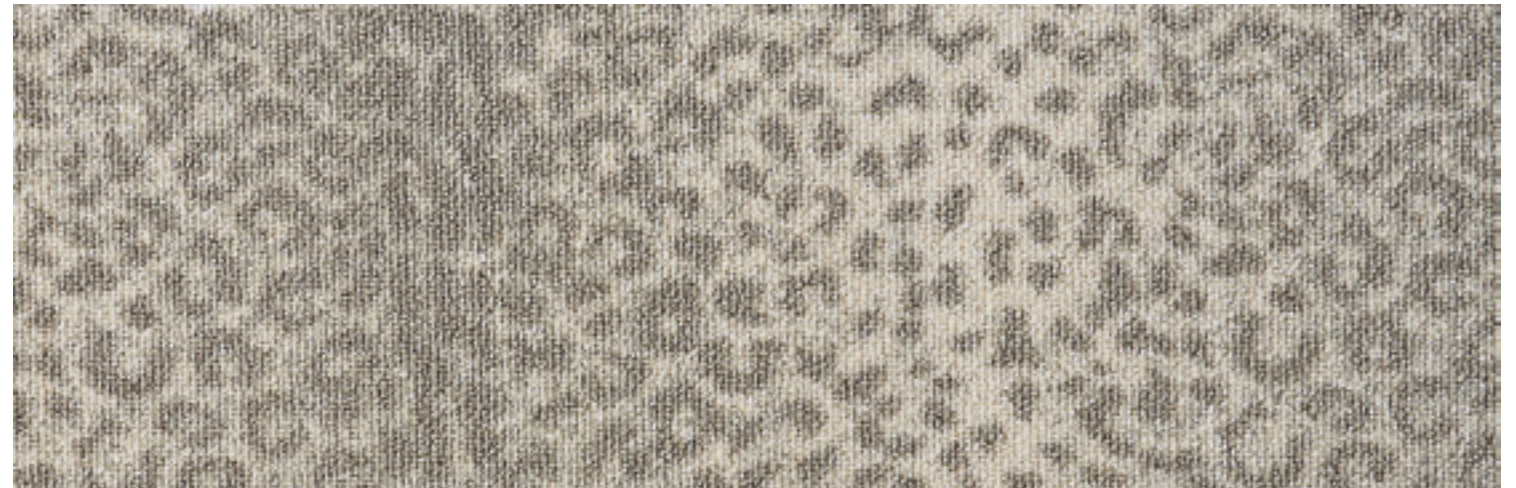
MORNING MIST



MOUNTAIN



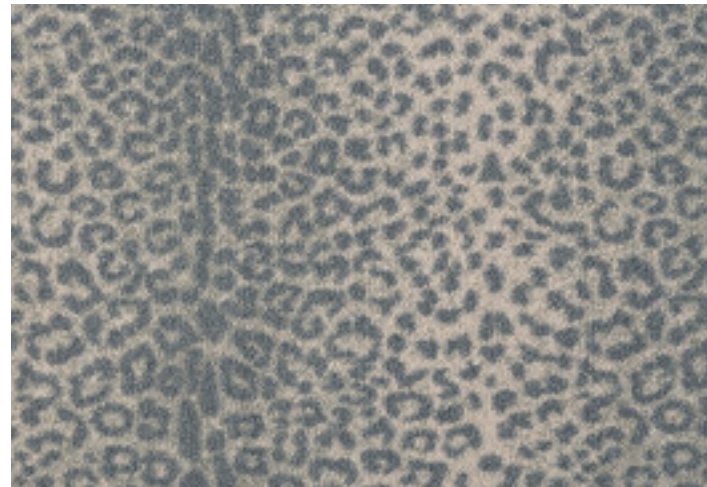
STONE



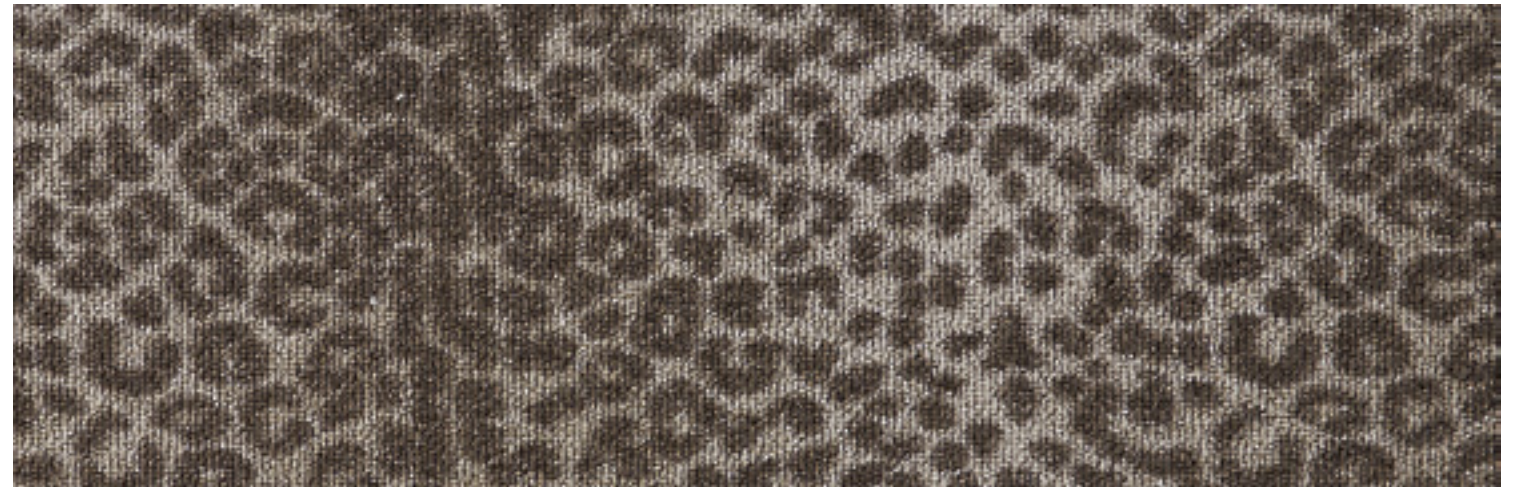
SAVANNAH



WATERFALL



EARTH





PRODUCT INFORMATION

COLLECTION:
LUSTERPOINT

CONSTRUCTION:
MACHINE TUFTED
(applied pattern)

FIBER CONTENT:
50% NEW ZEALAND WOOL
50% NOURLON™ NYLON

WIDTH:
13'2"

REPEAT:
26.9"W x 26.9"L

—NEW! LUSTERPOINT COLLECTION—

STERLING



STONE



MOUNTAIN



POTTERY



DUNE



MORNING MIST



SAVANNAH



WATERFALL



BRUSH



METALLIC



EARTH



MIDNIGHT





PRODUCT INFORMATION

COLLECTION:
LUSTERPOINT

CONSTRUCTION:
MACHINE TUFTED
(applied pattern)

FIBER CONTENT:
50% NEW ZEALAND WOOL
50% NOURLON™ NYLON

WIDTH:
13'2"

REPEAT:
15.3"W x 15.3"L

—NEW! LUSTERPOINT COLLECTION—

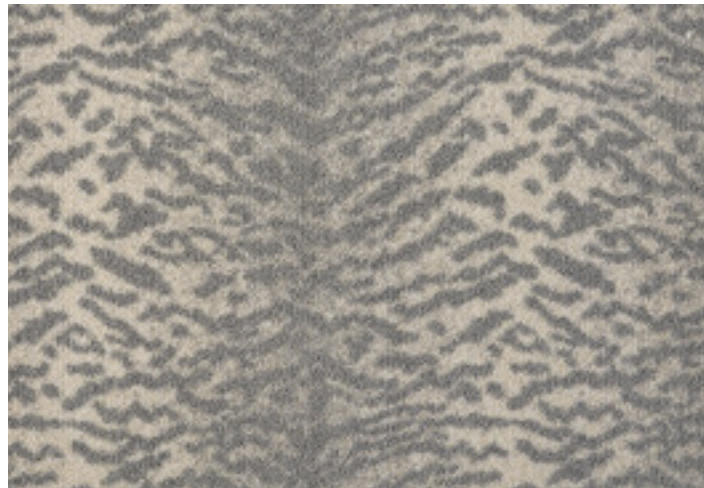
BRUSH



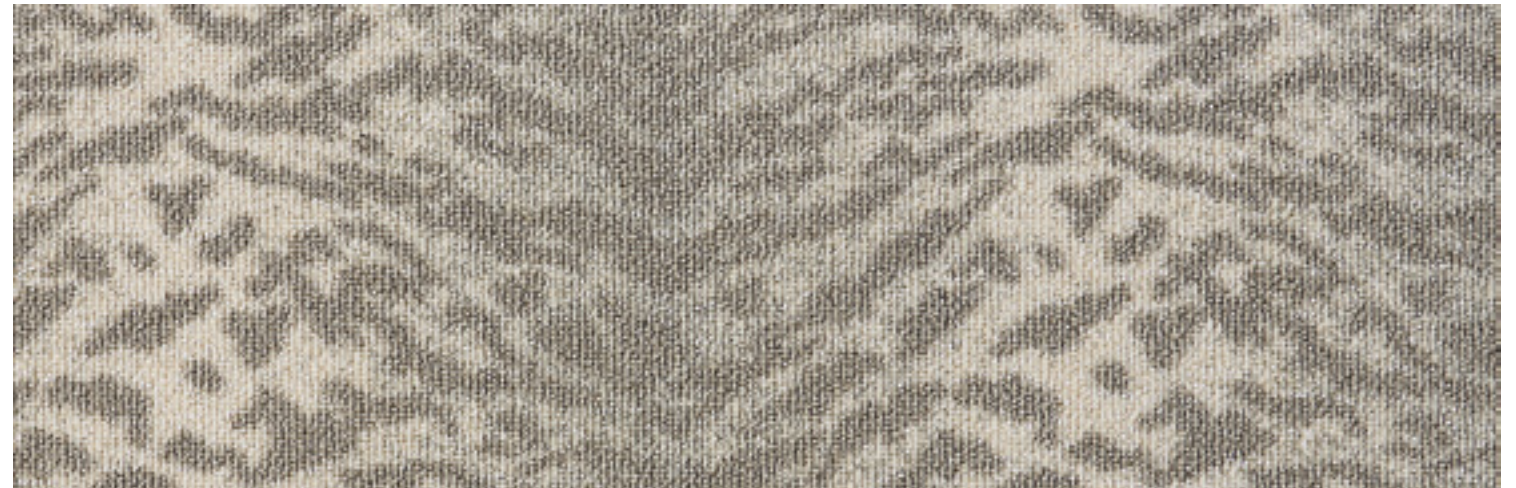
MORNING MIST



MOUNTAIN



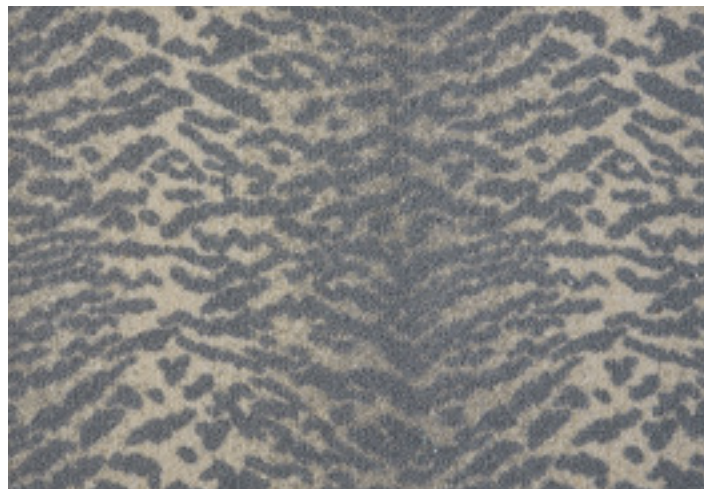
STONE



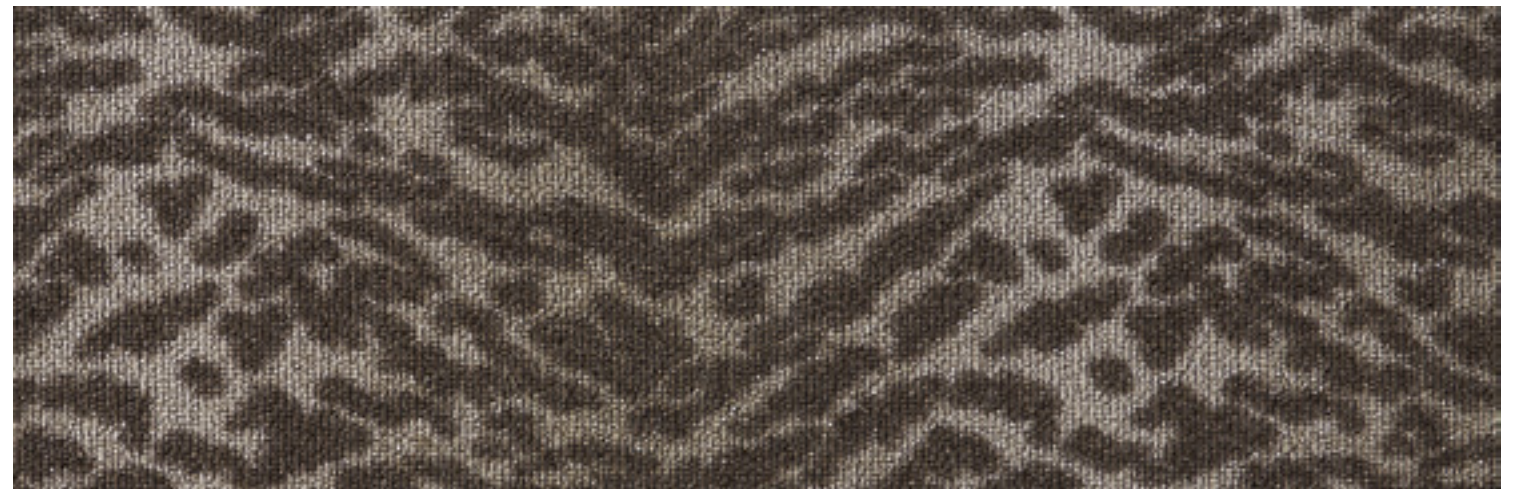
SAVANNAH



WATERFALL



EARTH



TRANSCEND

MACHINE TUFTED
APPLIED PATTERN



PRODUCT INFORMATION

COLLECTION:
TRANSCEND

CONSTRUCTION:
MACHINE TUFTED
(applied pattern)

FIBER CONTENT:
50% WOOL
50% NOURLON™ NYLON

WIDTH:
13'2"

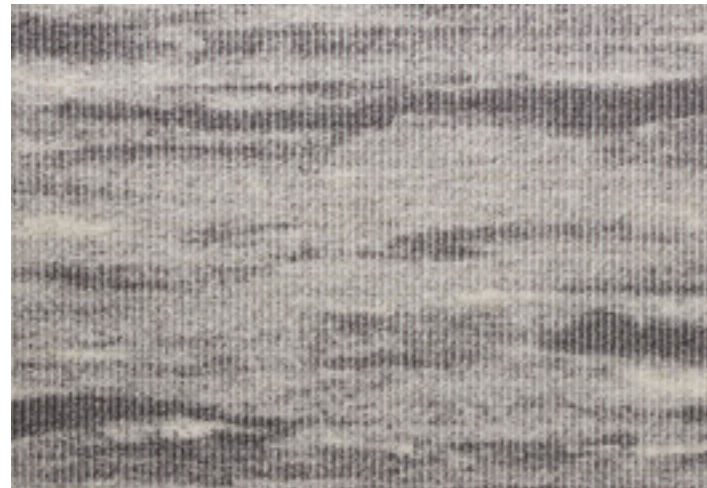
REPEAT:
39.36"W x 19.50"L

NEW STYLE!

JETSTREAM



MAELSTROM



TRAVERSE

MACHINE TUFTED
APPLIED PATTERN



PRODUCT INFORMATION

COLLECTION:
TRAVERSE

CONSTRUCTION:
MACHINE TUFTED
(applied pattern)

FIBER CONTENT:
50% WOOL
50% NOURLON™ NYLON

WIDTH:
13'2"

REPEAT:
39.37"W x 39.37"L

NEW COLORS!

PUMICE



FLANNEL



DENIM



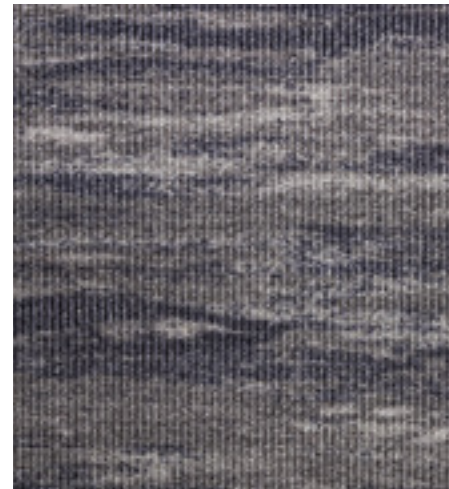
TIDAL



EARTH



VORTEX



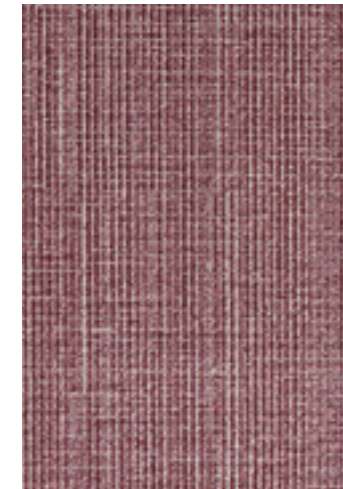
EMBER



TEAL



BORDEAUX



JAVA





PRODUCT INFORMATION

COLLECTION:
COSMOPOLITAN

CONSTRUCTION:
WOVEN FACE-TO-FACE

FIBER CONTENT:
100% NEW ZEALAND WOOL

WIDTH:
13'9"

REPEAT:
8"W x 8"L

RUNNER INFORMATION

WIDTH:
30" & 36"

REPEAT:
8"L

BORDER INFORMATION

WIDTH:
8"

REPEAT:
12.5"L



NEW COLORS!
COSMOPOLITAN COLLECTION

SHELL BORDER



SHELL BROADLOOM



SHELL RUNNER



CHROME BROADLOOM



CHROME RUNNER



CHROME BORDER



BARK BROADLOOM



BARK RUNNER



BARK BORDER





PRODUCT INFORMATION

COLLECTION:
COSMOPOLITAN

CONSTRUCTION:
WOVEN FACE-TO-FACE

FIBER CONTENT:
100% NEW ZEALAND WOOL

WIDTH:
13'9"

REPEAT:
8"W x 8"L

RUNNER INFORMATION

WIDTH:
30" & 36"

REPEAT:
8"L

BORDER INFORMATION

WIDTH:
8"

REPEAT:
12.5"L



NEW COLORS!
COSMOPOLITAN COLLECTION

SHELL BORDER



SHELL BROADLOOM



SHELL RUNNER



CHROME BROADLOOM



CHROME RUNNER



CHROME BORDER



BARK BROADLOOM



BARK RUNNER



BARK BORDER





NEW COLORS!
GRAND PARTERRE COLLECTION

PRODUCT INFORMATION

COLLECTION:
GRAND PARTERRE

CONSTRUCTION:
WOVEN FACE-TO-FACE

FIBER CONTENT:
100% NEW ZEALAND WOOL

WIDTH:
13'9"

REPEAT:
41.2"W x 41.4"L

RUNNER INFORMATION

WIDTH:
30" & 41"

REPEAT:
46.9"L

BORDER INFORMATION

WIDTH:
12"

REPEAT:
41.4"L



COASTAL BROADLOOM



COASTAL RUNNER



COASTAL BORDER



HAZELNUT BROADLOOM



HAZELNUT RUNNER



HAZELNUT BORDER



SHELL BORDER



SHELL BROADLOOM



SHELL RUNNER



GRAPHITE BROADLOOM



GRAPHITE RUNNER

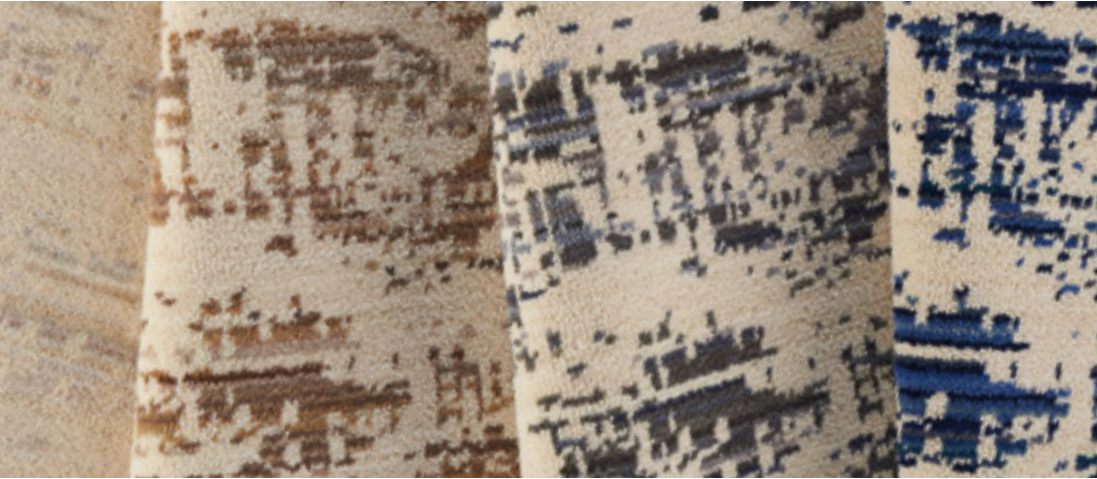


GRAPHITE BORDER



DIFFUSED

WOVEN AXMINSTER



PRODUCT INFORMATION

COLLECTION:
BRUSHWORKS

CONSTRUCTION:
WOVEN AXMINSTER

FIBER CONTENT:
80% WOOL
20% NYLON

WIDTH:
12'8"

REPEAT:
39.37"W x 39.37"L



— *NEW! BRUSHWORKS COLLECTION* —

IVORY



TAUPE



GREY



BLUE



VARIEGATED

WOVEN AXMINSTER



PRODUCT INFORMATION

COLLECTION:
BRUSHWORKS

CONSTRUCTION:
WOVEN AXMINSTER

FIBER CONTENT:
80% WOOL
20% NYLON

WIDTH:
12'8"

REPEAT:
19.69"W x 15.75"L

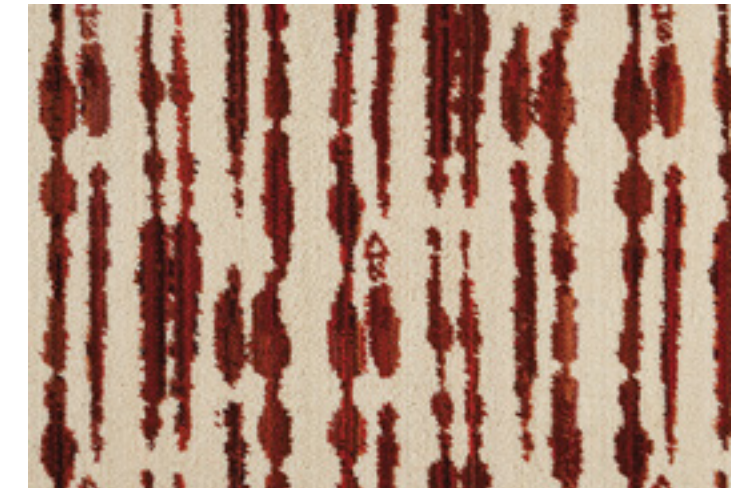


— *NEW! BRUSHWORKS COLLECTION* —

TAUPE



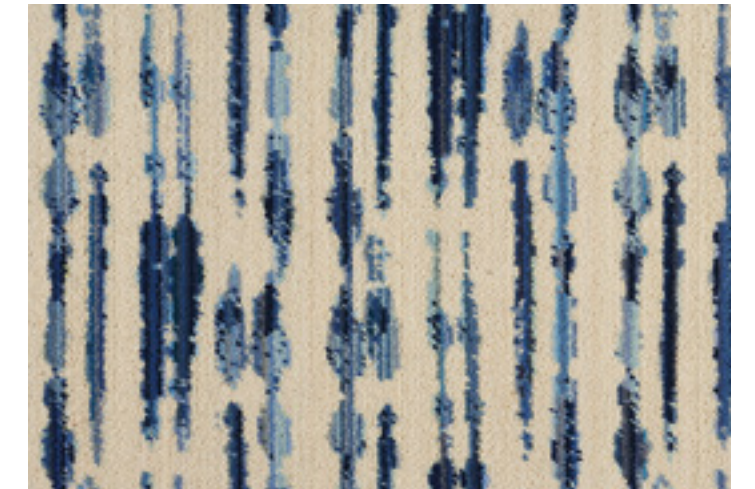
RED



GREY



BLUE





PRODUCT INFORMATION

COLLECTION:
GROSSE POINTE

CONSTRUCTION:
PETIT POINT WILTON

FIBER CONTENT:
100% NEW ZEALAND WOOL

REPEAT:
31.5"W x 22.05"L

WIDTH:
13'2"



PRODUCT INFORMATION

COLLECTION:
GROSSE POINTE

CONSTRUCTION:
PETIT POINT WILTON

FIBER CONTENT:
100% NEW ZEALAND WOOL

REPEAT:
26.17"W x 17.19"L

WIDTH:
13'2"



NEW STYLE!
GROSSE POINTE COLLECTION

NEW STYLE!
GROSSE POINTE COLLECTION

SAND/IVORY



MEADOW/IVORY



IVORY



SAND



GULF/IVORY



STORM/QUARTZ



WALNUT/PUTTY



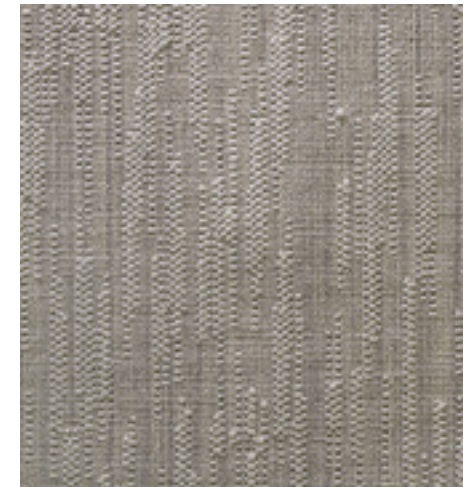
PUTTY



GULF



QUARTZ





PRODUCT INFORMATION

COLLECTION:
GROSSE POINTE

CONSTRUCTION:
PETIT POINT WILTON

FIBER CONTENT:
100% NEW ZEALAND WOOL

REPEAT:
7.87"W x 7.09"L

WIDTH:
13'2"




PUTTY/IVORY



NEW STYLE!
GROSSE POINTE COLLECTION

SUNRISE/IVORY



SAND/IVORY



WALNUT/PUTTY



MEADOW/IVORY



GULF/IVORY



STORM/QUARTZ



SPLENDOR STRIA

HAND-LOOMED



PRODUCT INFORMATION

COLLECTION:
SPLENDOR

CONSTRUCTION:
HAND-LOOMED

FIBER CONTENT:
55% WOOL/37% POLYESTER
8% NYLON

WIDTH:
15'

REPEAT:
N/A

— *NEW! SPLENDOR COLLECTION* —

IVORY



SILVERADO



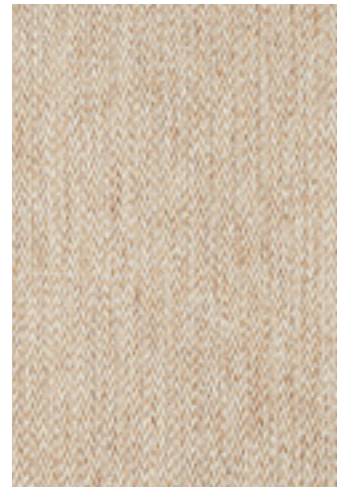
SMOKE



ECRU



SANDALWOOD



HEATHERWOOD



ASH



SPLENDOR WAVE

HAND-LOOMED



PRODUCT INFORMATION

COLLECTION:
SPLENDOR

CONSTRUCTION:
HAND-LOOMED

FIBER CONTENT:
25% WOOL
75% POLYESTER

WIDTH:
15'

REPEAT:
3.75"W x 1"L

— *NEW! SPLENDOR COLLECTION* —

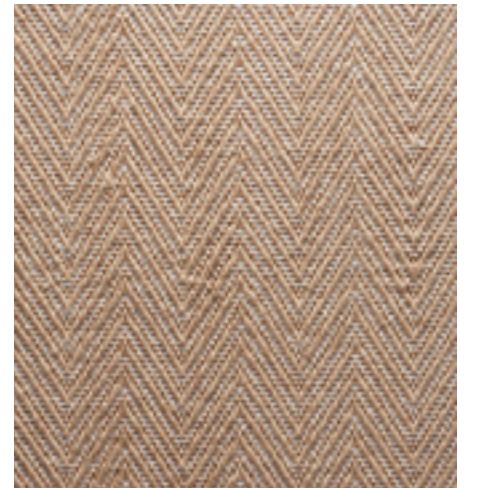
IVORY



ECRU



SANDALWOOD



SILVERADO



SMOKE



HEATHERWOOD



ASH





PRODUCT INFORMATION

COLLECTION:
BELLEVUE

CONSTRUCTION:
MACHINE TUFTED

FIBER CONTENT:
10% WOOL/40% PET
50% POLYPROPYLENE

WIDTH:
13"2'

REPEAT:
17.99"W x 26.22"L

NEW STYLE!

SHADOW



SEAPORT



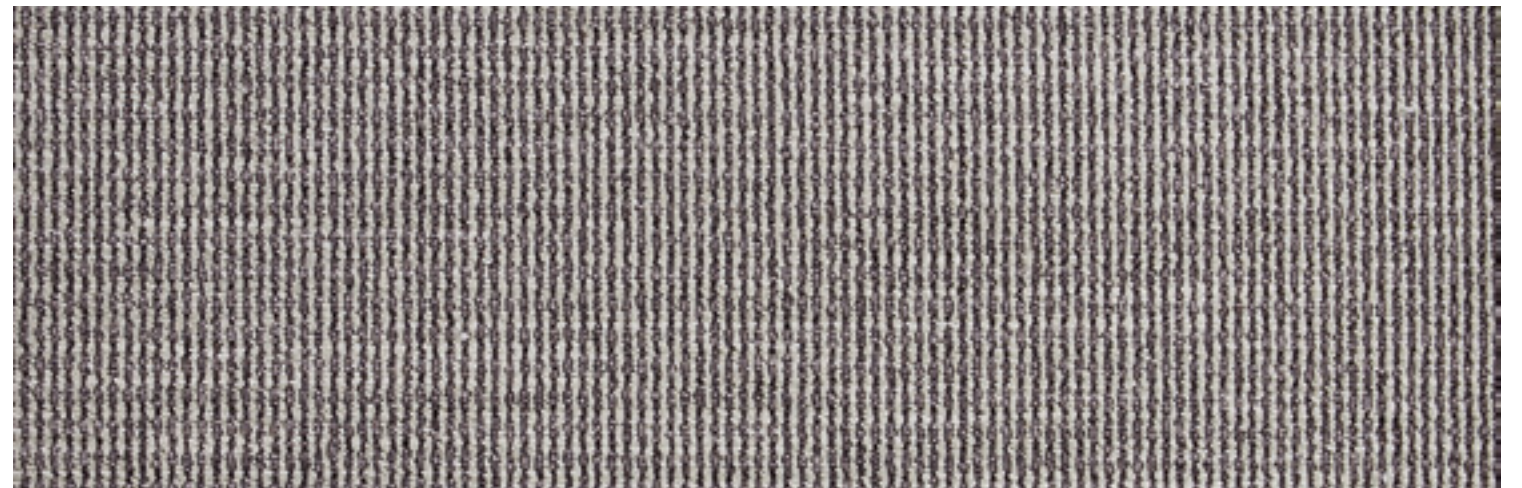
MIST



WILLOW



HAZE



PEWTER



SABLE



SLATE





PRODUCT INFORMATION

COLLECTION:
BELLINGHAM

CONSTRUCTION:
MACHINE TUFTED

FIBER CONTENT:
10% WOOL/70% PET
20% POLYPROPYLENE

WIDTH:
13"2'

REPEAT:
17.99"W x 26.22"L

NEW STYLE!

SHADOW



SEAPORT



MIST



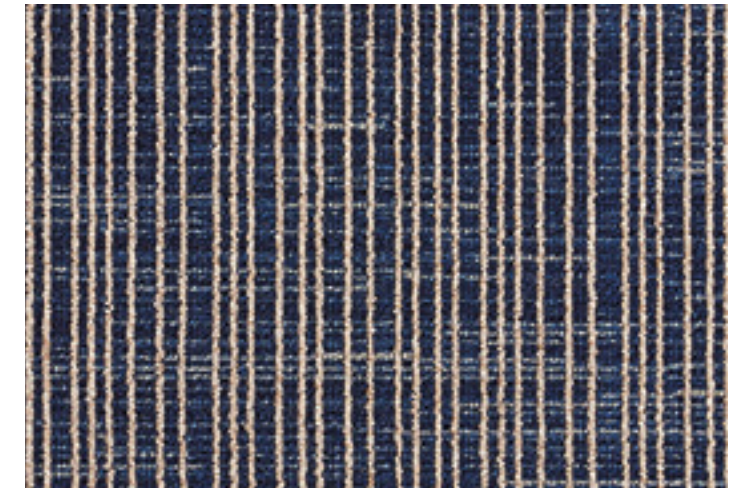
WILLOW



HAZE



INDIGO



PEWTER



SABLE



SLATE



ONYX





PRODUCT INFORMATION

COLLECTION:
EURO

CONSTRUCTION:
MACHINE TUFTED
(applied pattern)

FIBER CONTENT:
20% WOOL
80% NYLON

WIDTH:
13'2"

REPEAT:
13.11"W x 16.30"L

EARL GREY



NEW STYLE!
EURO COLLECTION

ANTIQUÉ GOLD



STONEBRIDGE



RIVERSIDE



BLUE VELVET



DRAWBRIDGE



DARK KNIGHT





PRODUCT INFORMATION

COLLECTION:
MAXELL

CONSTRUCTION:
MACHINE WOVEN

FIBER CONTENT:
100% POLYESTER

WIDTH:
13"2'

REPEAT:
26.38"W x 26.38"L

NEW STYLE!
MAXELL COLLECTION



PRODUCT INFORMATION

COLLECTION:
CHAINSTITCH

CONSTRUCTION:
HAND-LOOMED

FIBER CONTENT:
30% WOOL
70% POLYESTER

WIDTH:
15'

REPEAT:
0.50"W x 0.50"L

NEW STYLE!

STERLING



BUFF



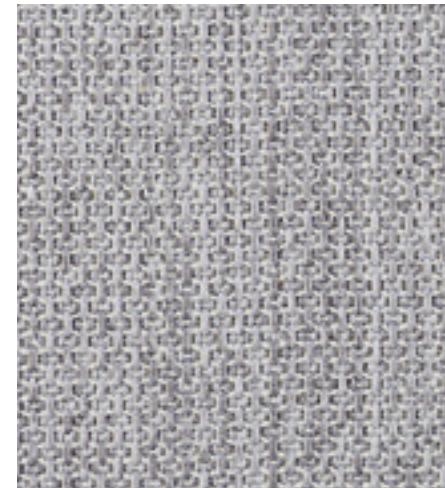
GRANITE



HALO



SHALESTONE



PLATINUM



QUARTZITE



ARMOUR



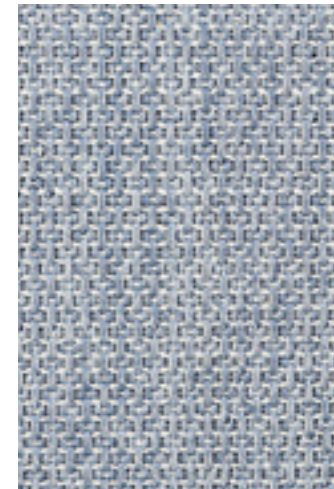
TWILIGHT



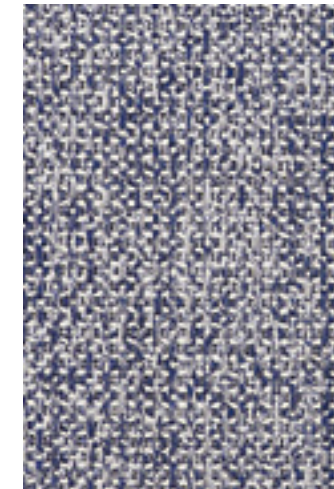
BISQUE



SKY



INDIGO



ONYX



KIAWAH CHEVRON

HAND-LOOMED



PRODUCT INFORMATION

COLLECTION:
KIAWAH

CONSTRUCTION:
HAND-LOOMED

FIBER CONTENT:
30% WOOL
70% POLYESTER

WIDTH:
15'

REPEAT:
1.5"W x 5.5"L

— *NEW! KIAWAH COLLECTION* —

IVORY



TOAST



STONE



FLANNEL



CHARCOAL



MONTEREY

HAND-LOOMED



PRODUCT INFORMATION

COLLECTION:
MONTEREY

CONSTRUCTION:
HAND-LOOMED

FIBER CONTENT:
60% WOOL
40% POLYESTER

WIDTH:
15'

REPEAT:
N/A

— *NEW STYLE!* —

PEBBLE BEACH



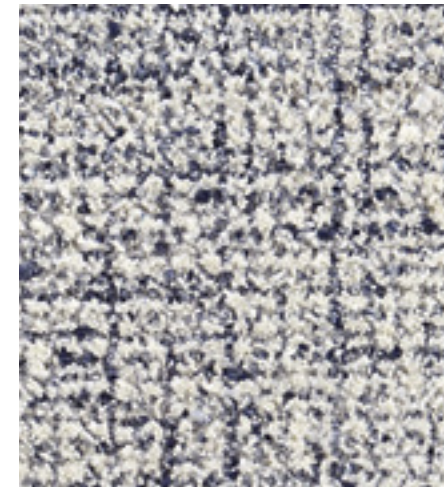
CARMEL BAY



PACIFIC GROVE



SEASIDE



DEL REY





PRODUCT INFORMATION

COLLECTION:
CARIBBEAN

CONSTRUCTION:
FLAT WOVEN

FIBER CONTENT:
10% WOOL
90% POLYPROPYLENE

REPEAT:
6.3"W x 7.9"L

WIDTH:
13'2"

NEW STYLE!
CARIBBEAN COLLECTION



PRODUCT INFORMATION

COLLECTION:
CARIBBEAN

CONSTRUCTION:
FLAT WOVEN

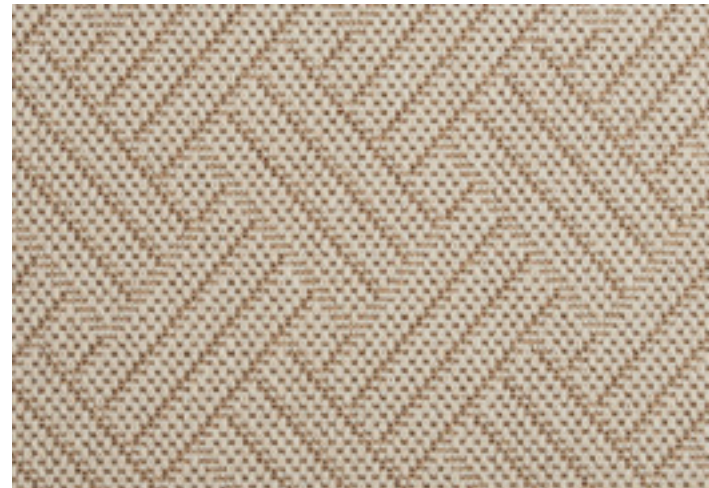
FIBER CONTENT:
10% WOOL
90% POLYPROPYLENE

REPEAT:
5.5"W x 6.7"L

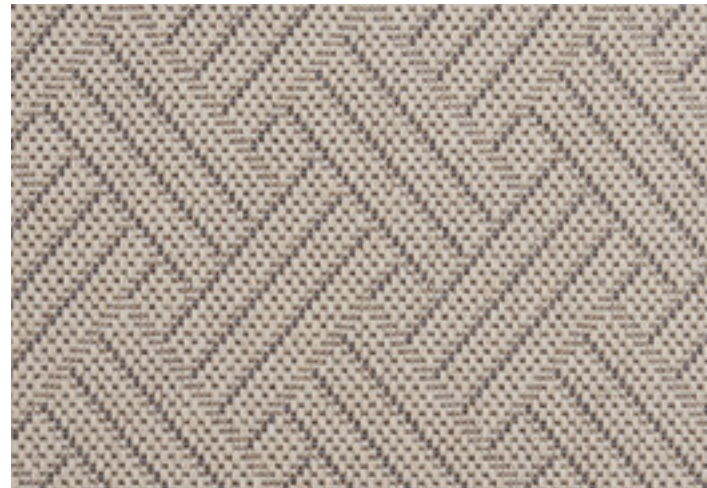
WIDTH:
13'2"

NEW STYLE!
CARIBBEAN COLLECTION

SAND



SHELL



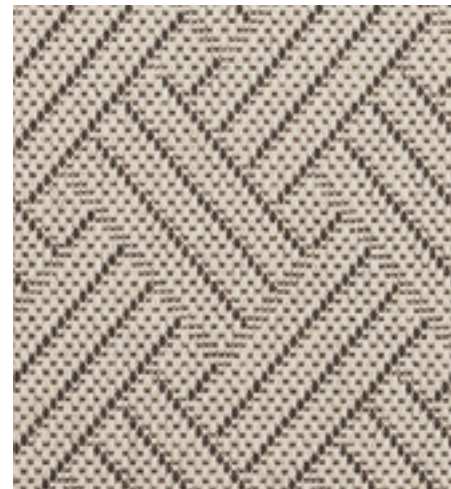
SHELL



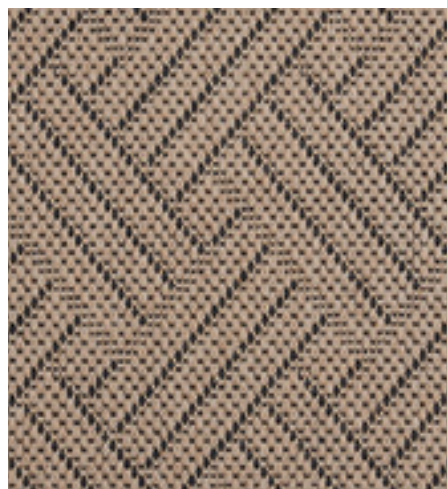
SAND



GULL



TIKI



OYSTER



OYSTER



TIKI



GULL





PRODUCT INFORMATION

COLLECTION:
CARIBBEAN

CONSTRUCTION:
FLATWEAVE

FIBER CONTENT:
10% WOOL
90% POLYPROPYLENE

REPEAT:
1.5"W x 1.9"L

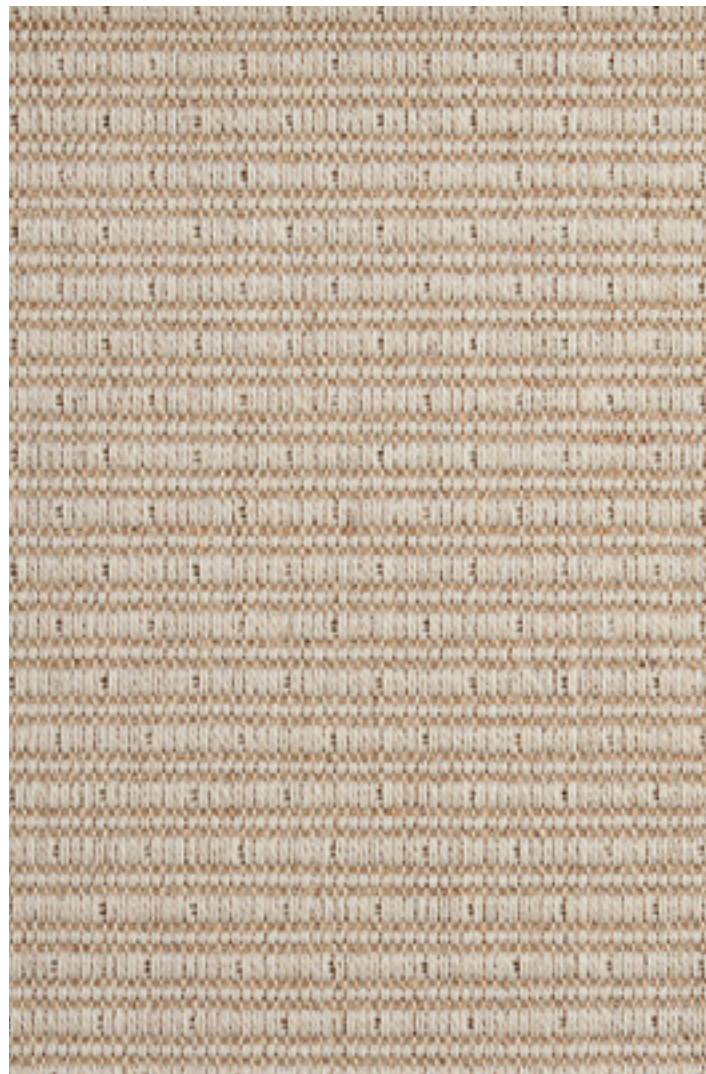
WIDTH:
13'2"

NEW STYLE!
CARIBBEAN COLLECTION

TIKI



SAND



SHELL



OYSTER



GULL





Nourison[™]

Timeless Design for the Modern Age

Nourison USA

5 Sampson Street, Saddle Brook, NJ 07663 | (800) 223-1110 | Fax (201) 368-0739

New York Showroom

295 Fifth Avenue Suite 114, New York, NY 10016 | (212) 545-1030

Atlanta Showroom | Atlanta Merchandise Mart

240 Peachtree Street NW, Space 1L1,2, Atlanta, GA 30303 | (404) 584-7255

Las Vegas Showroom | World Market Center, Building C

455 S Grand Central Pkwy, Suite C112, Las Vegas, NV 89106 | (702) 454-2600

High Point Showroom | International Home Furnishings Center (IHFC)

210 E Commerce Avenue, InterHall Space IH101 | High Point, NC 27260 | (336) 841-6900

www.nourison.com

©Nourison 2018 | 0118